

**UV FS & FS Biconcave Lenses**

Catalogue number		Diameter D, mm		Focal length	Centre thickness	Edge thickness	Price, EUR
UV FS	FS	Metric	English	F, mm	CT, mm	ET, mm	UV FS / FS
114-1104	114-3104	12.5	12.7	-12.5	3.7	5.8	49 / 47
114-1108	114-3108	12.5	12.7	-25.0	2.3	3.2	49 / 47
114-1110	114-3110	12.5	12.7	-30.0	1.3	2.5	49 / 47
114-1114	114-3114	12.5	12.7	-50.0	2.6	3.0	49 / 47
114-1118	114-3118	12.5	12.7	-75.0	2.7	3.0	49 / 47
114-1122	114-3122	12.5	12.7	-100.0	2.8	3.0	47 / 45
114-1204	114-3204	25.0	25.4	-25.0	5.3	9.5	71 / 69
114-1208	114-3208	25.0	25.4	-50.0	4.2	6.0	71 / 69
114-1212	114-3212	25.0	25.4	-75.0	3.8	5.0	71 / 69
114-1216	114-3216	25.0	25.4	-100.0	3.6	4.5	71 / 69
114-1220	114-3220	25.0	25.4	-150.0	3.9	4.5	71 / 69
114-1224	114-3224	25.0	25.4	-200.0	3.0	3.9	70 / 68

Please add code M to the catalogue number for metric dimensions and code E for English.  
Please contact us for other size, focus or precision requirements.

COATINGS

MIRRORS

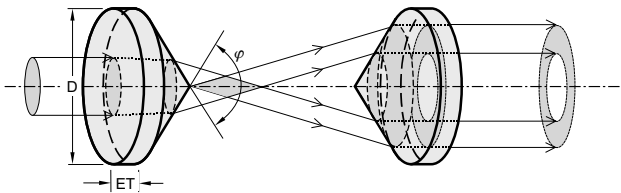
LENSES

**CONICAL LENSES (AXICONS)**

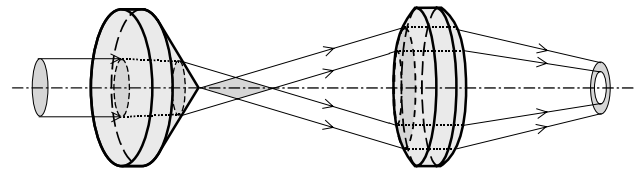
- Can be made from most optical materials

*Most of the lenses are available from stock and can be shipped the same day an order is placed.*

Two axicons together produce a thick-walled hollow “pipe” of light.



An axicon with a spherical lens produces an annular focus.



*We can supply custom cutting, edging, coating or complete fabrication if required. If you do not find what you need in our list of stock items, please send your specification or drawings for a custom quotation.*

**SPECIFICATIONS**

Material	BK7, FS
Surface quality	60–40 scratch & dig
Clear aperture	90% of the diameter
Diameter tolerance	+0.00 -0.12 mm
Angle tolerance	±0.5°
Surface irregularity	1 λ @ 633 nm

WINDOWS & FILTERS

PRISMS

POLARISING OPTICS

**HOUSING ACCESSORIES**

- Self-Centering Lens Mounts  
830-0010  
*See page 5.44*



Catalogue number		Diameter D,	Apex angle	Price, EUR
BK7	FS	mm	φ, deg	BK7 / FS
130-0240	130-3240	25.4	140	160 / 283
130-0260	130-3260	25.4	160	160 / 283
130-0265	130-3265	25.4	165	160 / 283
130-0270	130-3270	25.4	170	160 / 283
130-0275	130-3275	25.4	175	160 / 283
130-0278	130-3278	25.4	178	160 / 283
130-0360	130-3360	30.0	160	197 / 350
130-0365	130-3365	30.0	165	197 / 350
130-0370	130-3370	30.0	170	197 / 350

Please contact us for other size or precision requirements.

UV & IR OPTICS