

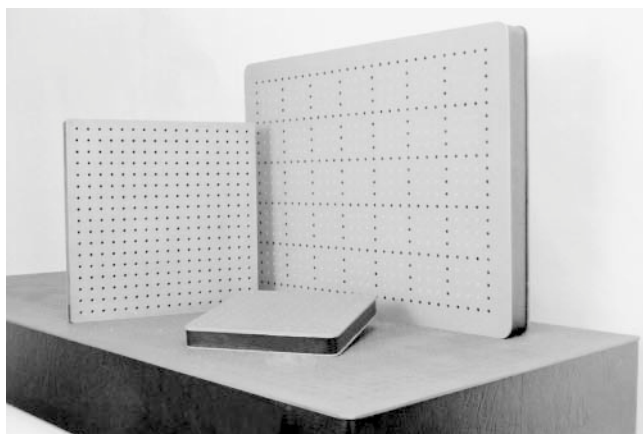
## HONEYCOMB BREADBOARDS 1HB

core – 265 kg/m<sup>3</sup> 0.25 mm thick steel honeycomb

top skin – 4-6 mm thick ferromagnetic stainless steel

pattern of M6 holes spaced by 25 mm

flatness  $\pm 0.03$  mm/m<sup>2</sup>



**Honeycomb Breadboards 1HB** provide a particularly effective way to expand the useful area of an optical table. The mounting surface has tapped **M6 holes on 25 mm centers** for permanent mounting of components. These baseplates use the same sandwich structure as our full size honeycomb table tops. **The standard top skin is made of ferromagnetic stainless steel. Thickness of the skin is 4-6 mm,** depending on the dimensions of the table top.

All Honeycomb Breadboards have in each corner of the bottom side a grid of nine M6 tapped mounting holes. The Honeycomb Breadboards 1HB can be mounted at the bottom side of a table or elevated above its surface using the Silent Rods 2SR.

These Breadboards **are not intended as a substitute for optical tables. Their size-to-thickness ratio produces relatively low end-to-end rigidity,** although their local rigidity over distances of less than about 30 to 60 cm is excellent. When attached solidly to a dynamically rigid optical table, performance of resulting working surface becomes comparable to that of the table itself.



*A breadboard may be mounted on a table by silent rods*

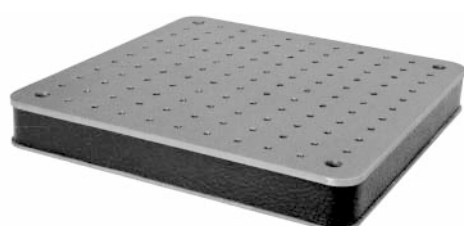
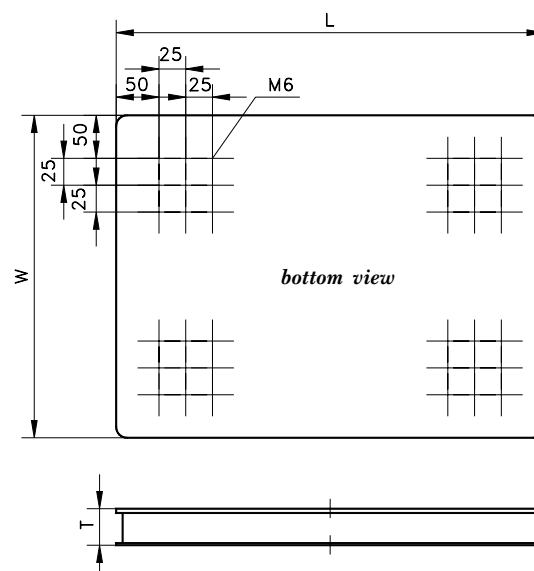
### SIZES OF OPTICAL TABLE TOPS IN STOCK

Model	Width, mm	Length, mm	Thickness, mm	Weight kg
<b>1HB03-03-04</b>	300	300	40	7
<b>1HB044-044-04</b>	440	440	40	15
<b>1HB06-08-07 (05)</b>	600	800	70 (50)	38
<b>1HB05-10-07 (05)</b>	500	1000	70 (50)	42

On request we can produce breadboards of any size and thickness.

For example, the chart above lists the Honeycomb Breadboards with special dimensions, like 1HB044-044-04.

Take advantage of our flexibility and order Honeycomb Breadboards of any custom size and shape.



**1HB03-03-04**



**1HB06-08-07**