

P-LINK

Gentec-EO now offers you the P-LINK, a sophisticated power monitor in a form that is ideally suited for networked OEM installations. This very compact interface box is the choice for users who want to do all the control as well as the analysis from their computer. With its impressive features for statistics calculation and display options, the P-LINK is really Gentec-EO's answer to scientific or OEM users who need a low-cost computer based power monitor.

Remote Control

PC-LINK is our user-friendly communication software package. It lets you control the P-LINK completely from your PC. Upgrades for PC-LINK are available on our website.

OEM Monitor

Its very compact size and advanced features make the P-LINK the perfect candidate for integration in machines. You can then control it with our PC-LINK software or with PC serial commands. You can even connect many P-LINK units to a single computer, which makes it a device of choice for the simultaneous monitoring of many detectors.

USB or RS-232

Just plug the detector into P-LINK. Then plug P-LINK into your PC, click on the PC-LINK icon and you are ready to go. Installation and startup could not be easier. Not only does the USB connection provide the communication link but it also supplies the power for P-LINK. The only extra step for the RS-232 model is connecting the power supply. As easy as a child's play!

Automatic Head Recognition

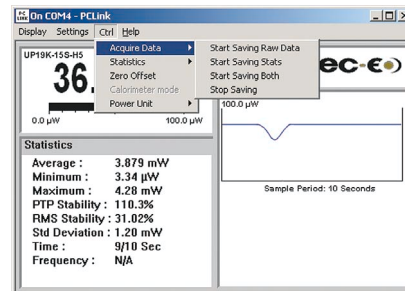
Just as with the SOLO PE, the P-LINK will recognize your Gentec-EO power head as soon as you plug it in. Only menus that function for that head will appear. Moreover, the P-LINK will auto-calibrate using the data stored in the intelligent connector to insure the most accurate measurement possible. That includes Gentec-EO's *Personal wavelength correction™* a wavelength correction that is based on spectral data measured from your specific detector.

Feature Rich

The P-LINK retains most of the SOLO features. That includes the anticipation circuitry for fast response. You also get data sampling, statistics, and analysis functions. Use the defaults or select your own sampling rate, sample period or total duration to do the statistics. You also have access to correction factors (one multiplier and one offset) for enhanced measurement flexibility.



P-LINK



MONITOR

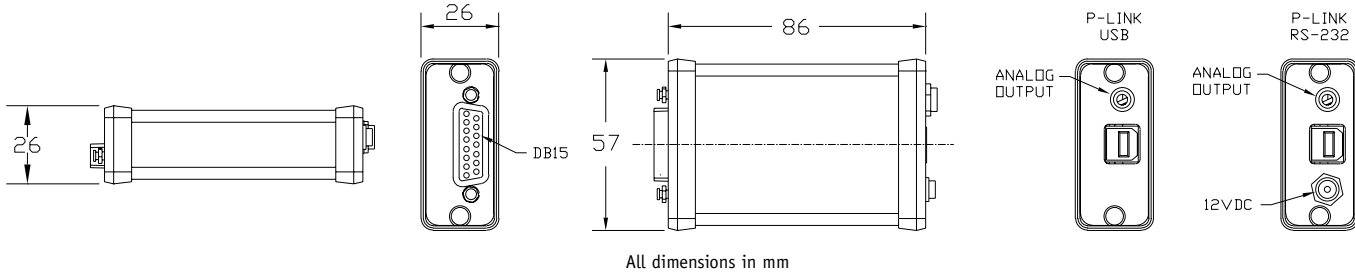
PC-based Power Monitor

- Single Channel
- PC-Based Microsoft Windows™
- Full Statistical Functions
- Easy Data Acquisition Capabilities
- PC Serial Commands
- Power/Photo Detectors
- USB or RS-232

P-LINK SPECIFICATIONS

P-LINK USB

P-LINK RS-232



P-LINK USB

P-LINK RS-232

POWER METER SPECIFICATIONS

Power Range (thermal head)	1 mW to 10 kW
Power Range (photo detector head)	300 pW to 3 W
Resolution (digital)	5 μ W on the 30 mW scale
Monitor Accuracy	$\pm 0.5\%$ ($\pm 5\ \mu$ V full scale)
Response Time (accelerated)	1 sec
Statistics	Current value, Max., Min., Avg., Std. Dev., RMS & PTP Stability, Time

DETECTOR COMPATIBILITY

Power detector (thermopile)	Average Power, Single Shot Energy
Photo Detector	Average Power

GENERAL SPECIFICATIONS

Software	Full Window application PC-LINK software	
Communication	USB and RS-232 Communication between Host Computer and P-LINK	
Digital Display	Computer Screen	
Data Storage	Limited by PC capacity	
Data Displays	Real time, Histogram, Statistics	
User input correction factors	1 Multiplier and 1 Offset	
Analog Output	0-2 volt, full scale, $\pm 0.5\%$	
Internet upgrades	PC-LINK upgrades via USB or RS-232	
PC Serial commands	USB and RS-232	
Dimensions	86 (L) x 58 (W) x 27 (H) mm	
Weight	0.106 kg	0.120 kg
External Power Supply	Not required	100-240 VAC, 50-60 Hz to 12 VDC, 800 mA - 1 A.

Order number	Description
100-200439	P-LINK USB
100-200440	P-LINK RS-232 with Power Supply

Specifications subject to change without notice



GENTEC ELECTRO-OPTICS INC.
www.gentec-eo.com